

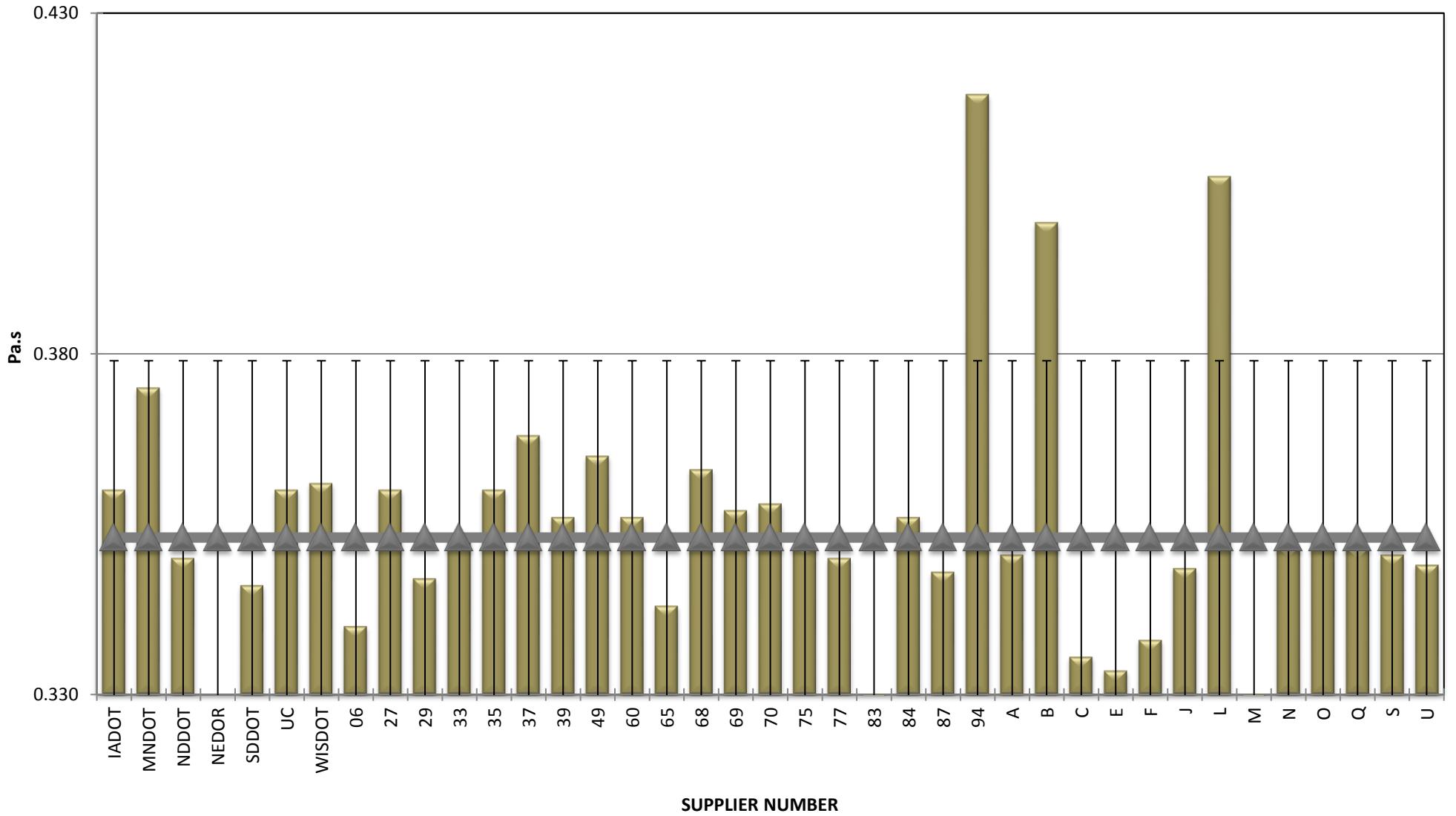


**COMBINED STATE BINDER GROUP ROUND ROBIN SUMMARY B 2017-4**  
**PG 58S-28**

	<b>Rot. Visc.</b>	<b>ODSR</b>	<b>RTFO DSR</b>	<b>PAVDSR</b>	<b>Mass Loss</b>	<b>S-value</b>	<b>m-value</b>	<b>Jnr @ 100 Pa</b>	<b>% Rec. 100 Pa</b>	<b>Jnr @ 3200 Pa</b>	<b>% Rec. @ 3200 Pa</b>
<b>A</b>											
19	0.354	1.89	4.96	4,648	0.635	241	0.336	1.750	6.30	1.920	2.30
51	0.354	1.93	5.14	4,351	0.639	234	0.334	1.700	6.60	1.870	2.40
97	0.338	1.91	5.10	4,870	0.649	244	0.330	1.710	5.80	1.850	2.30
98	0.356	1.90	5.24	4,473	0.653	256	0.330	1.660	6.70	1.810	2.50
<b>AVERAGE</b>	<b>0.351</b>	<b>1.91</b>	<b>5.11</b>	<b>4,586</b>	<b>0.644</b>	<b>244</b>	<b>0.333</b>	<b>1.705</b>	<b>6.35</b>	<b>1.863</b>	<b>2.38</b>
<b>B</b>											
01	0.410	1.91	4.83	4,410	0.502	226	0.330	1.800	4.70	2.000	2.10
01	0.400	1.87	4.90	4,770	0.492	228	0.325	1.800	4.90	1.900	2.10
17	0.387	1.82	5.05	4,300	0.502	234	0.327	1.700	5.10	1.900	2.30
45	0.400	1.87	4.90	4,770	0.492	228	0.325	1.800	4.90	1.900	2.10
<b>AVERAGE</b>	<b>0.399</b>	<b>1.87</b>	<b>4.92</b>	<b>4,563</b>	<b>0.497</b>	<b>229</b>	<b>0.327</b>	<b>1.775</b>	<b>4.90</b>	<b>1.925</b>	<b>2.15</b>
<b>C</b>											
28	0.338	1.95	5.46	4,639	0.502	277	0.312	1.560	5.74	1.680	2.69
66	0.336	1.91	5.18	4,837	0.472	269	0.315	1.610	7.77	1.800	2.57
90	0.338	1.94	5.16	4,285	0.468	269	0.317	1.620	7.88	1.820	2.56
99	0.330	1.97	5.39	4,835	0.467	277	0.313	1.580	6.03	1.720	2.68
<b>AVERAGE</b>	<b>0.336</b>	<b>1.94</b>	<b>5.30</b>	<b>4,649</b>	<b>0.477</b>	<b>273</b>	<b>0.314</b>	<b>1.593</b>	<b>6.85</b>	<b>1.755</b>	<b>2.62</b>
<b>E</b>											
15	0.330	1.88	4.76	4,460	0.556	237	0.322	1.805	5.33	1.973	1.63
89	0.337	1.85	4.76	4,410	0.556	242	0.324	1.810	4.87	1.970	1.60
<b>AVERAGE</b>	<b>0.334</b>	<b>1.87</b>	<b>4.76</b>	<b>4,435</b>	<b>0.556</b>	<b>239.5</b>	<b>0.323</b>	<b>1.808</b>	<b>5.10</b>	<b>1.972</b>	<b>1.62</b>
<b>F</b>											
02	0.343	1.94	4.89	4,547	0.457	263	0.321	1.770	5.09	1.920	2.21
11	0.339	1.90	4.71	4,376	0.443	262	0.319	1.870	4.53	2.020	2.03
34	0.335	1.96	4.45	4,660	0.504	246	0.325	1.940	4.82	2.130	1.83
48	0.335	1.92	4.25	4,780	0.496	269	0.329	2.040	4.98	2.230	1.73
56	0.338	1.84	4.58	4,750	0.546	270	0.327	1.880	5.91	2.090	1.55
62	0.338	1.92	4.92	4,548	0.480	267	0.323	1.740	6.16	1.910	2.26
<b>AVERAGE</b>	<b>0.338</b>	<b>1.91</b>	<b>4.63</b>	<b>4,610</b>	<b>0.488</b>	<b>262.8333</b>	<b>0.324</b>	<b>1.873</b>	<b>5.25</b>	<b>2.050</b>	<b>1.94</b>
<b>J</b>											
05	0.343	1.71	4.05	4,680	0.471	230	0.321	1.910	5.84	2.100	2.23
08	0.341	1.74	3.90	4,850	0.454	208	0.329	1.770	5.68	1.950	2.37
10	0.357	1.88	4.79	4,655	0.561	242	0.326	1.794	5.09	2.018	1.24
22	0.356	1.90	4.92	4,477	0.598	248	0.323	1.699	4.92	1.904	1.34
31	0.344	1.73	4.11	4,730	0.491	211	0.322	1.980	4.43	2.140	2.16
41	0.343	1.71	4.00	4,595	0.471	219	0.320	1.640	6.24	1.810	2.74
44	0.351	1.88	4.85	4,863	0.556	244	0.320	1.730	4.92	1.944	1.08
52	0.353	1.85	4.93	4,678	0.586	247	0.322	1.746	5.37	1.962	1.38
<b>AVERAGE</b>	<b>0.349</b>	<b>1.80</b>	<b>4.44</b>	<b>4,691</b>	<b>0.524</b>	<b>231.125</b>	<b>0.323</b>	<b>1.784</b>	<b>5.31</b>	<b>1.979</b>	<b>1.82</b>
<b>L</b>											
25	0.350	1.83	5.13	4,210	0.570	243	0.338				
59	0.462	2.11	4.92	3,820	0.479	256	0.327	1.680	8.45	1.930	2.39
<b>AVERAGE</b>	<b>0.406</b>	<b>1.97</b>	<b>5.02</b>	<b>4,015</b>	<b>0.525</b>	<b>250</b>	<b>0.333</b>	<b>1.680</b>	<b>8.45</b>	<b>1.930</b>	<b>2.39</b>
<b>M</b>											
04	0.308	1.84	4.45	4,573	0.424	255	0.334	1.941	4.30	2.191	1.10
47	0.313	1.85	4.22	4,274	0.328	233	0.330	2.050	4.30	2.304	1.00
57	0.310	1.82	4.21	4,024	0.421	238	0.330	2.041	4.30	2.308	1.00
<b>AVERAGE</b>	<b>0.310</b>	<b>1.84</b>	<b>4.29</b>	<b>4,290</b>	<b>0.391</b>	<b>242</b>	<b>0.331</b>	<b>2.011</b>	<b>4.30</b>	<b>2.268</b>	<b>1.03</b>
<b>N</b>											
07	0.353	1.85	4.64	4,220	0.468	230	0.343	1.850	6.60	2.020	2.30
43	0.351	1.93	4.84	4,100	0.543	249	0.334	1.772	5.41	1.941	1.56
95	0.351	2.03	4.74	3,940	0.496	248	0.326	1.839	4.33	1.992	1.41
<b>AVERAGE</b>	<b>0.352</b>	<b>1.94</b>	<b>4.74</b>	<b>4,087</b>	<b>0.502</b>	<b>242.3333</b>	<b>0.334</b>	<b>1.820</b>	<b>5.45</b>	<b>1.984</b>	<b>1.76</b>
<b>O</b>											
76	0.353	1.90	4.50	4,940	0.494	244	0.333	1.932	4.52	2.100	1.37
85	0.353	1.88	4.76	5,180	0.490	242	0.329	1.815	4.86	1.938	1.62
<b>AVERAGE</b>	<b>0.353</b>	<b>1.89</b>	<b>4.63</b>	<b>5,060</b>	<b>0.492</b>	<b>243</b>	<b>0.331</b>	<b>1.874</b>	<b>4.69</b>	<b>2.019</b>	<b>1.49</b>
<b>Q</b>											
23	0.353	1.81	4.58	4,738	0.585	251	0.332	1.905	5.65	2.093	2.02
93	0.350	1.82	4.55	4,409	0.558	252	0.324	1.930	5.46	2.110	1.95
<b>AVERAGE</b>	<b>0.352</b>	<b>1.82</b>	<b>4.57</b>	<b>4,574</b>	<b>0.572</b>	<b>252</b>	<b>0.328</b>	<b>1.918</b>	<b>5.56</b>	<b>2.102</b>	<b>1.99</b>
<b>S</b>											
53	0.348	1.88	4.32	4,384	0.563	254	0.332	2.080	3.73	2.330	
64	0.353	1.89	4.46	4,585	0.563	246	0.323	1.980	3.99	2.230	
<b>AVERAGE</b>	<b>0.351</b>	<b>1.89</b>	<b>4.39</b>	<b>4,485</b>	<b>0.563</b>	<b>250</b>	<b>0.328</b>	<b>2.030</b>	<b>3.86</b>	<b>2.280</b>	
<b>U</b>											
13	0.353	1.89	5.02	3,380	0.498	237	0.331	1.717	5.30	1.877	1.75
24	0.345	1.89	4.80	3,380	0.481	297	0.335	1.804	4.77	1.963	1.49
<b>AVERAGE</b>	<b>0.349</b>	<b>1.89</b>	<b>4.91</b>	<b>3,380</b>	<b>0.490</b>	<b>267</b>	<b>0.333</b>	<b>1.760</b>	<b>5.04</b>	<b>1.920</b>	<b>1.62</b>
<b>V</b>											
58	0.346	1.88	4.68	4,890	0.552	238	0.329	1.809	5.03	1.977	1.43
78	0.345	1.85	4.79	4,670	0.557	238	0.330	1.834	5.39	2.018	1.40
81	0.345	1.89	4.93	4,975	0.551	241	0.328	1.781	5.23	1.950	1.56
<b>AVERAGE</b>	<b>0.345</b>	<b>1.87</b>	<b>4.80</b>	<b>4,845</b>	<b>0.553</b>	<b>239</b>	<b>0.329</b>	<b>1.808</b>	<b>5.21</b>	<b>1.982</b>	<b>1.47</b>

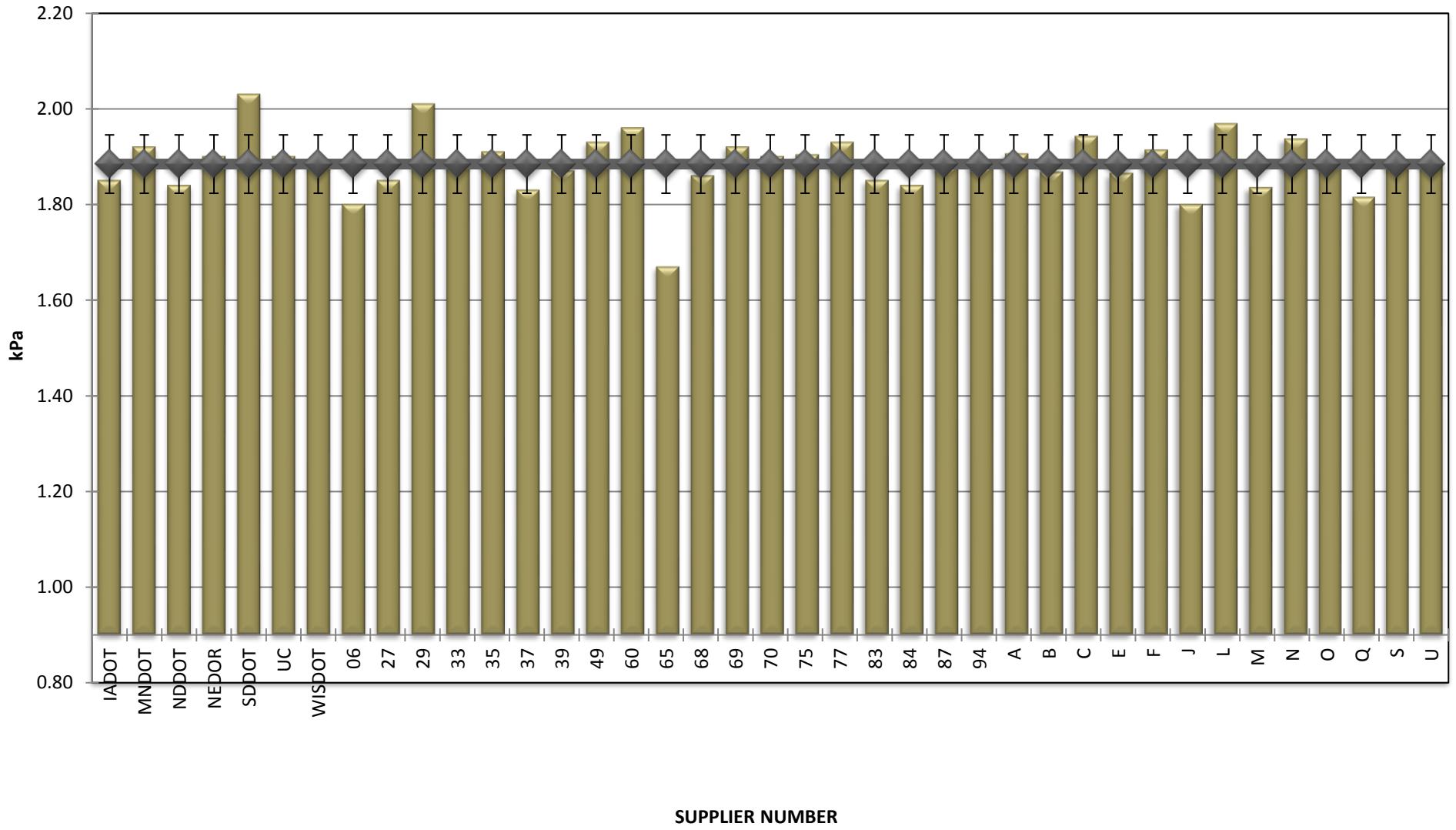
**COMBINED STATE BINDER GROUP ROUND ROBIN  
SUMMARY B 2017-4  
PG 58S-28**

**ROTATIONAL VISCOSITY**



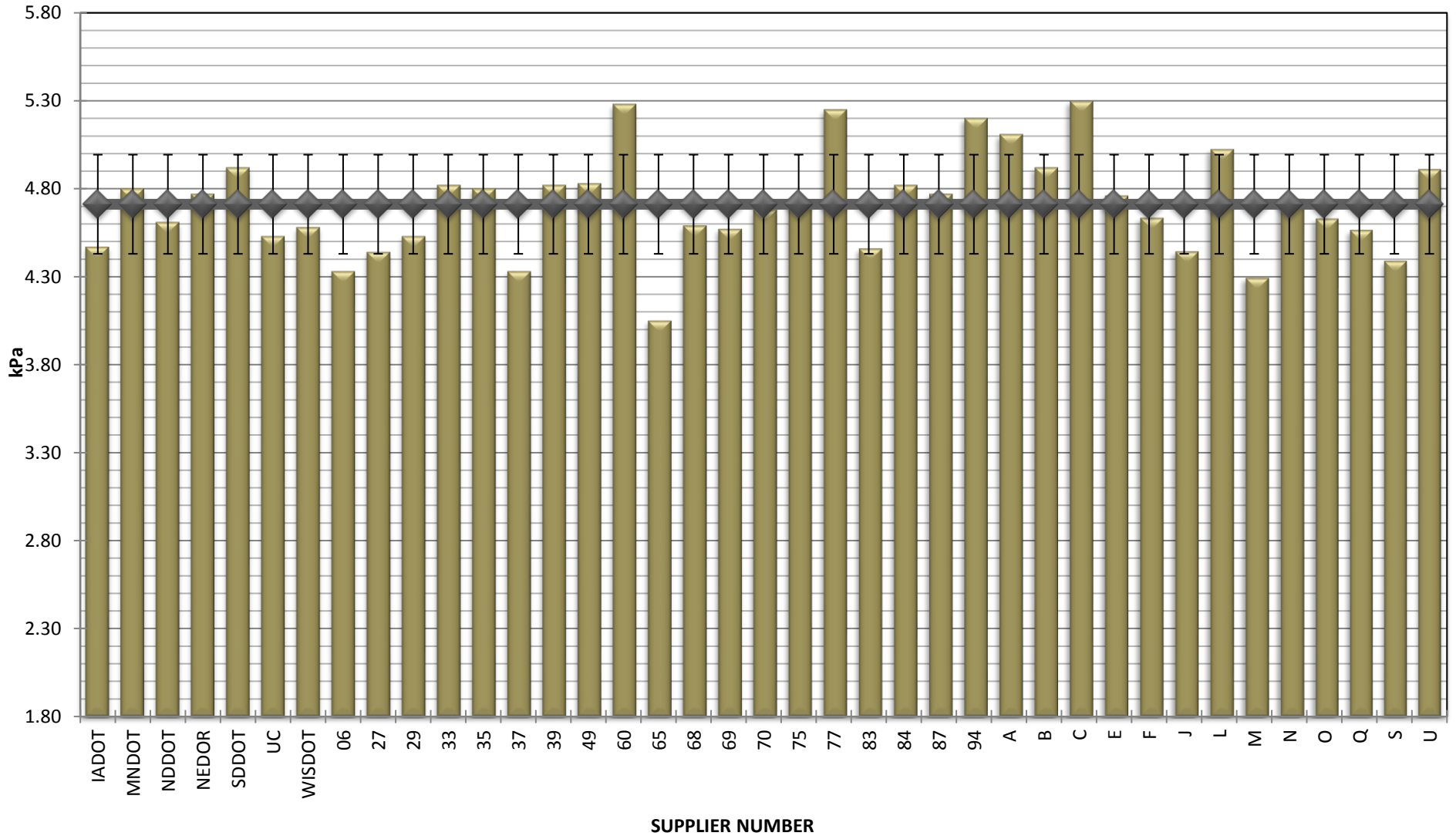
**COMBINED STATE BINDER GROUP ROUND ROBIN  
SUMMARY B 2017-4  
PG 58S-28**

**DSR - ORIGINAL**



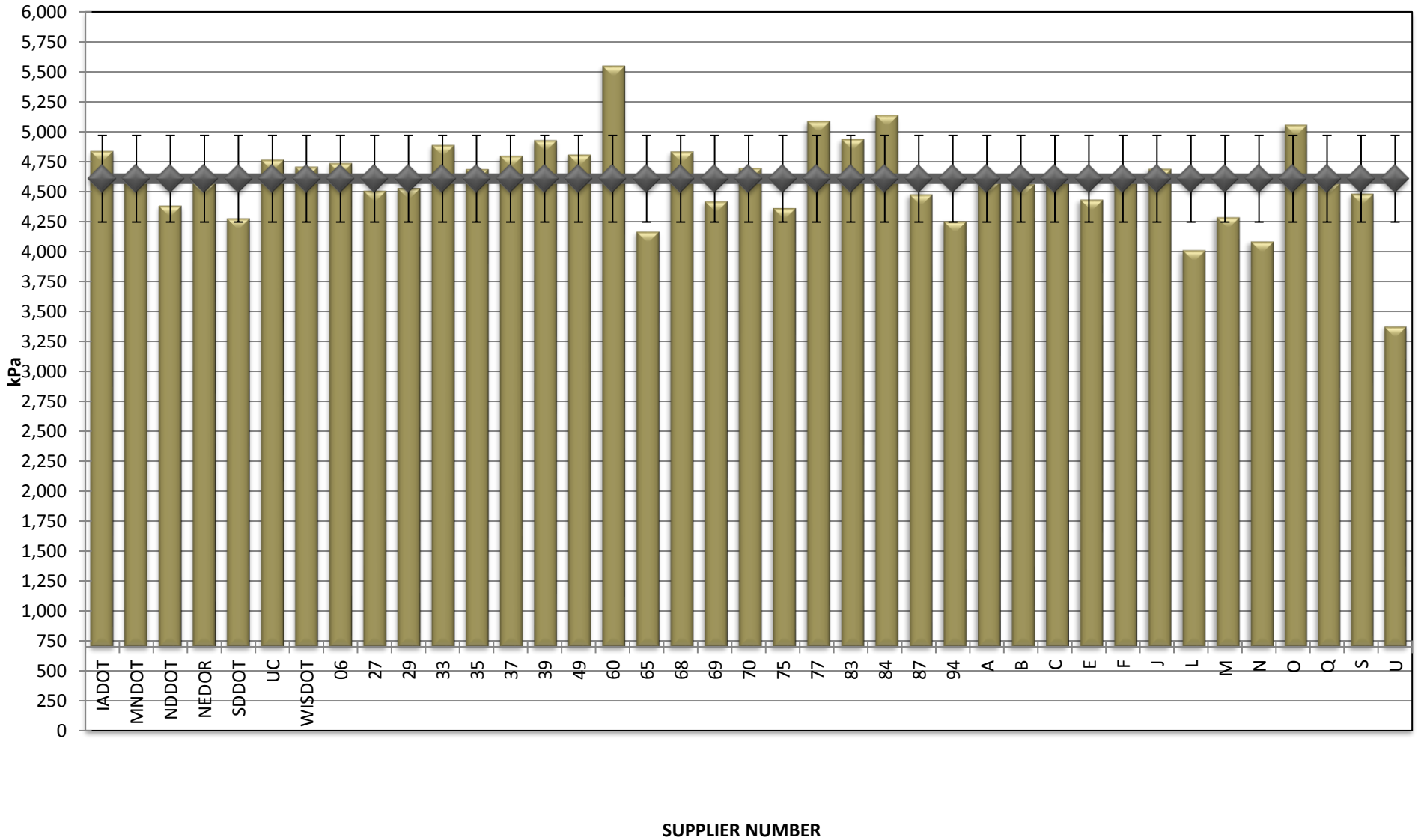
**COMBINED STATE BINDER GROUP ROUND ROBIN  
SUMMARY B 2017-4  
PG 58S-28**

**DSR - RTFO**



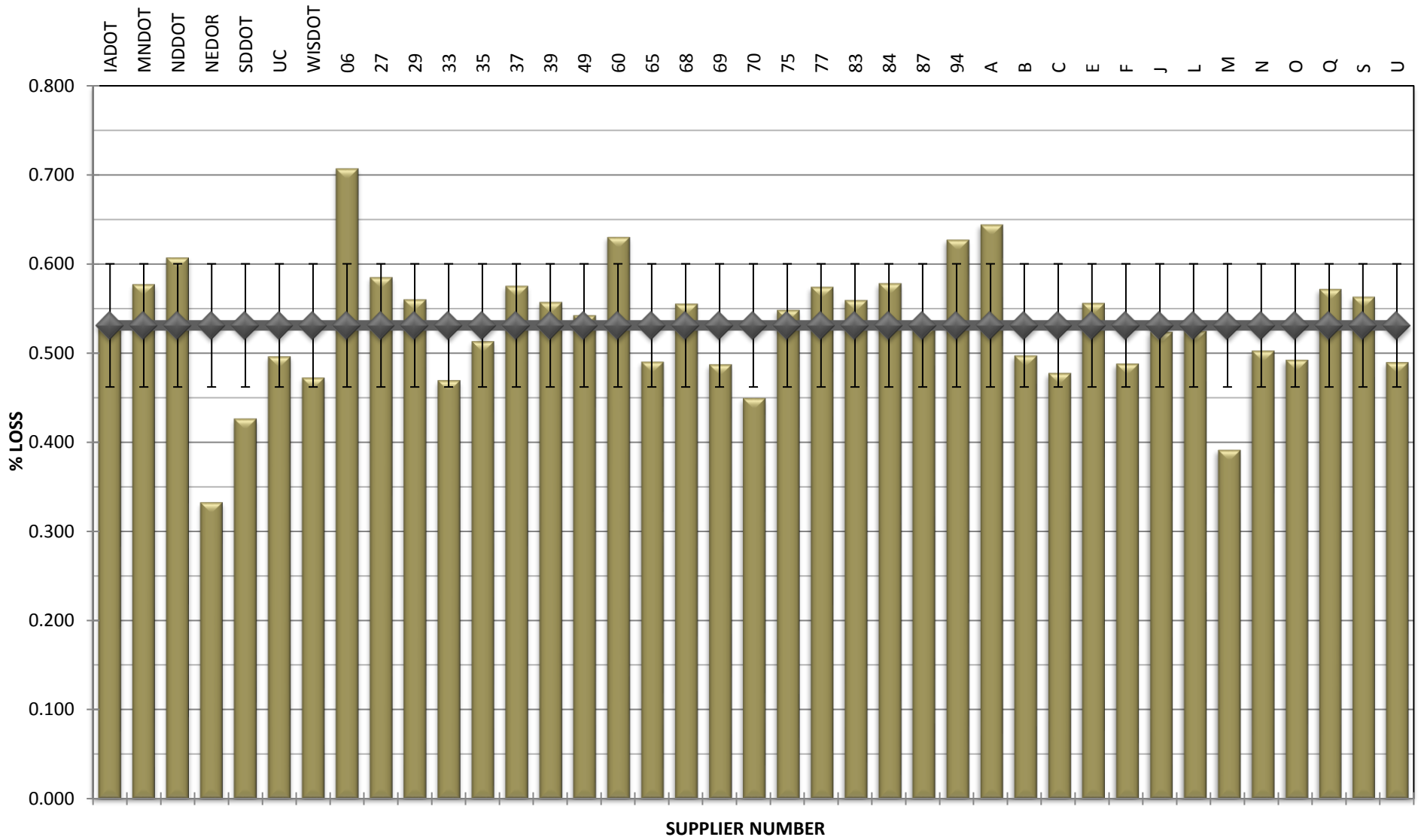
**COMBINED STATE BINDER GROUP ROUND ROBIN  
SUMMARY B 2017-4  
PG 58S-28**

**DSR - PAV**



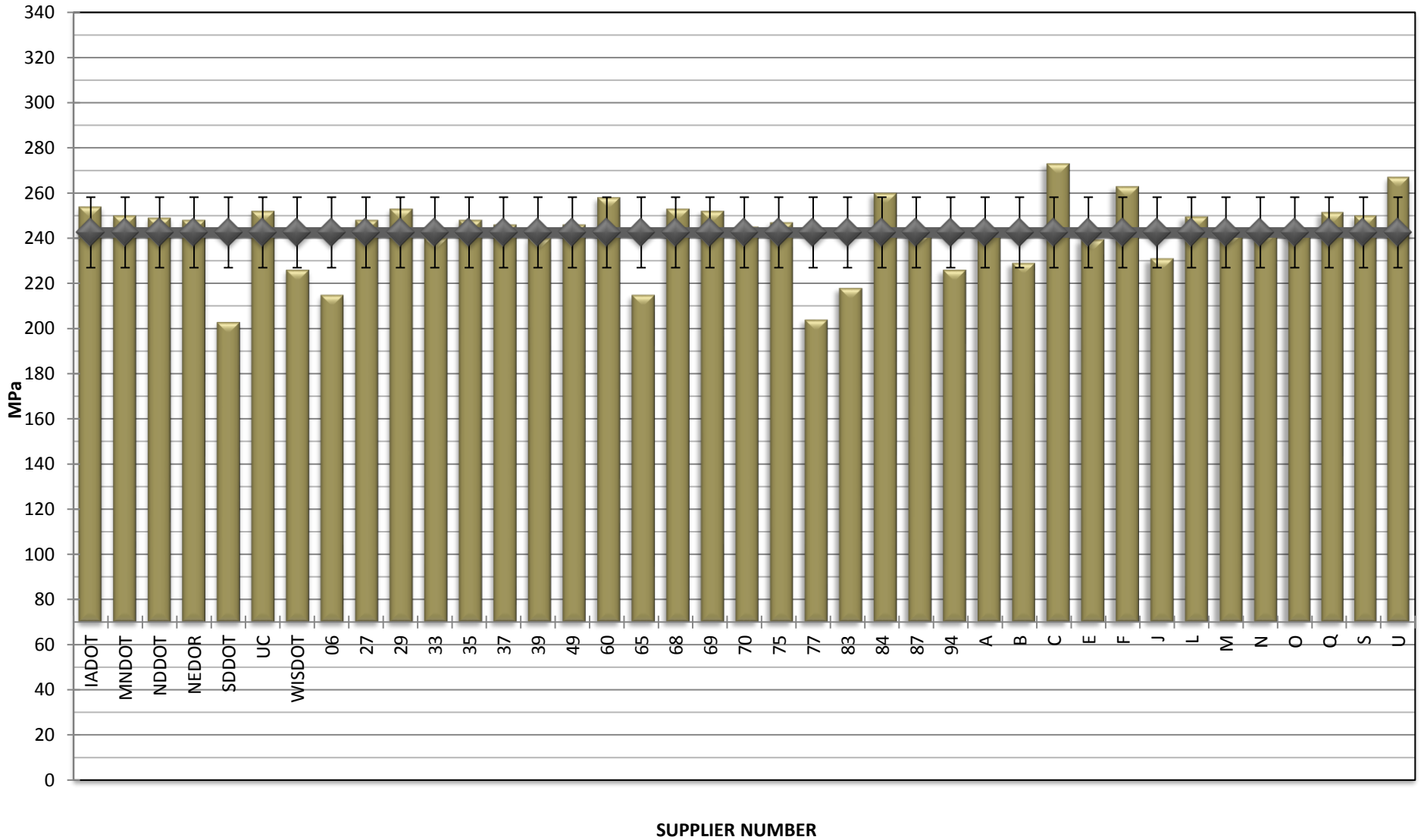
**COMBINED STATE BINDER GROUP ROUND ROBIN  
SUMMARY B 2017-4  
PG 58S-28**

**RTFO MASS LOSS**



**COMBINED STATE BINDER GROUP ROUND ROBIN  
SUMMARY B 2017-4  
PG 58S-28**

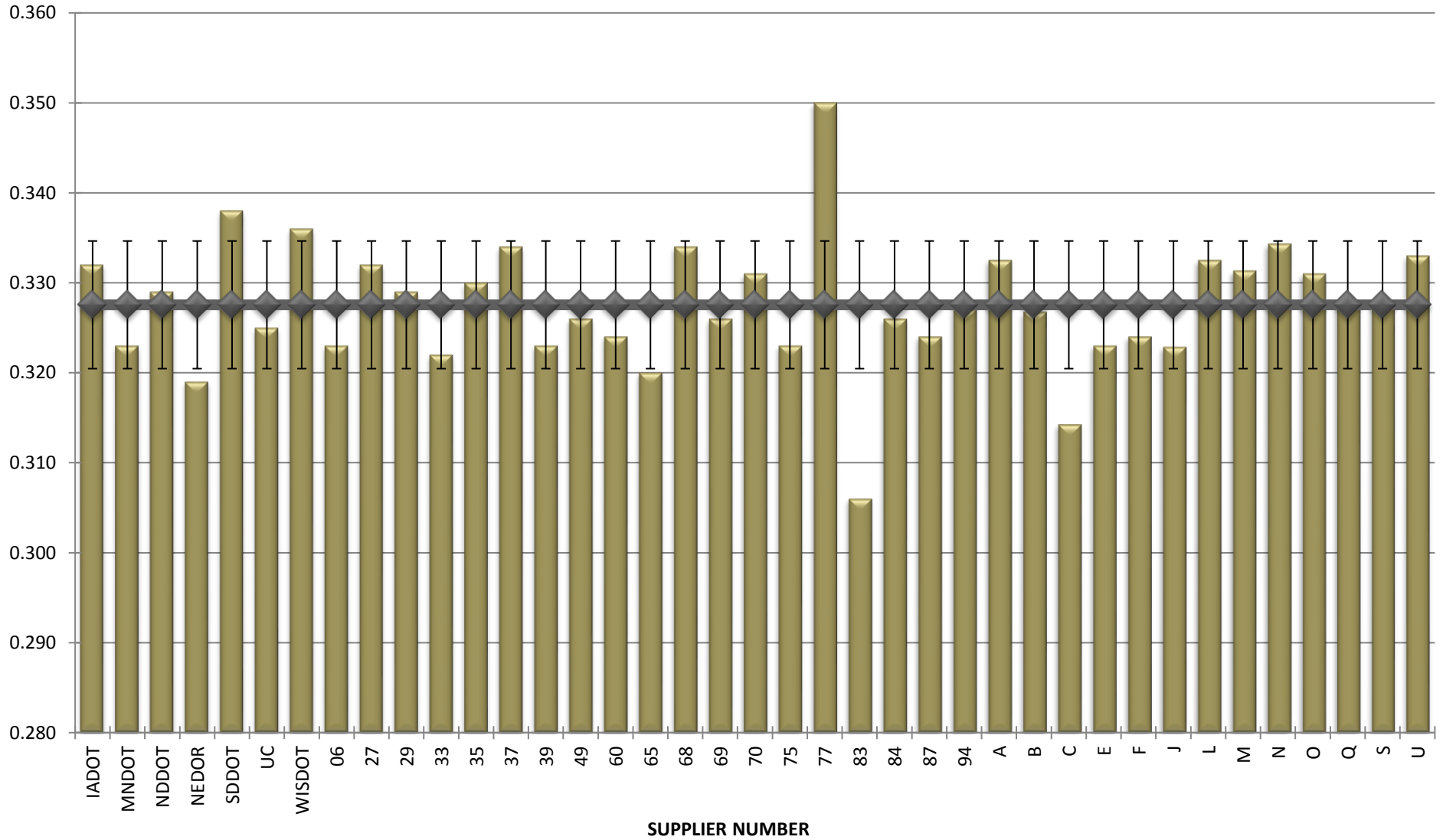
**BBR STIFFNESS**





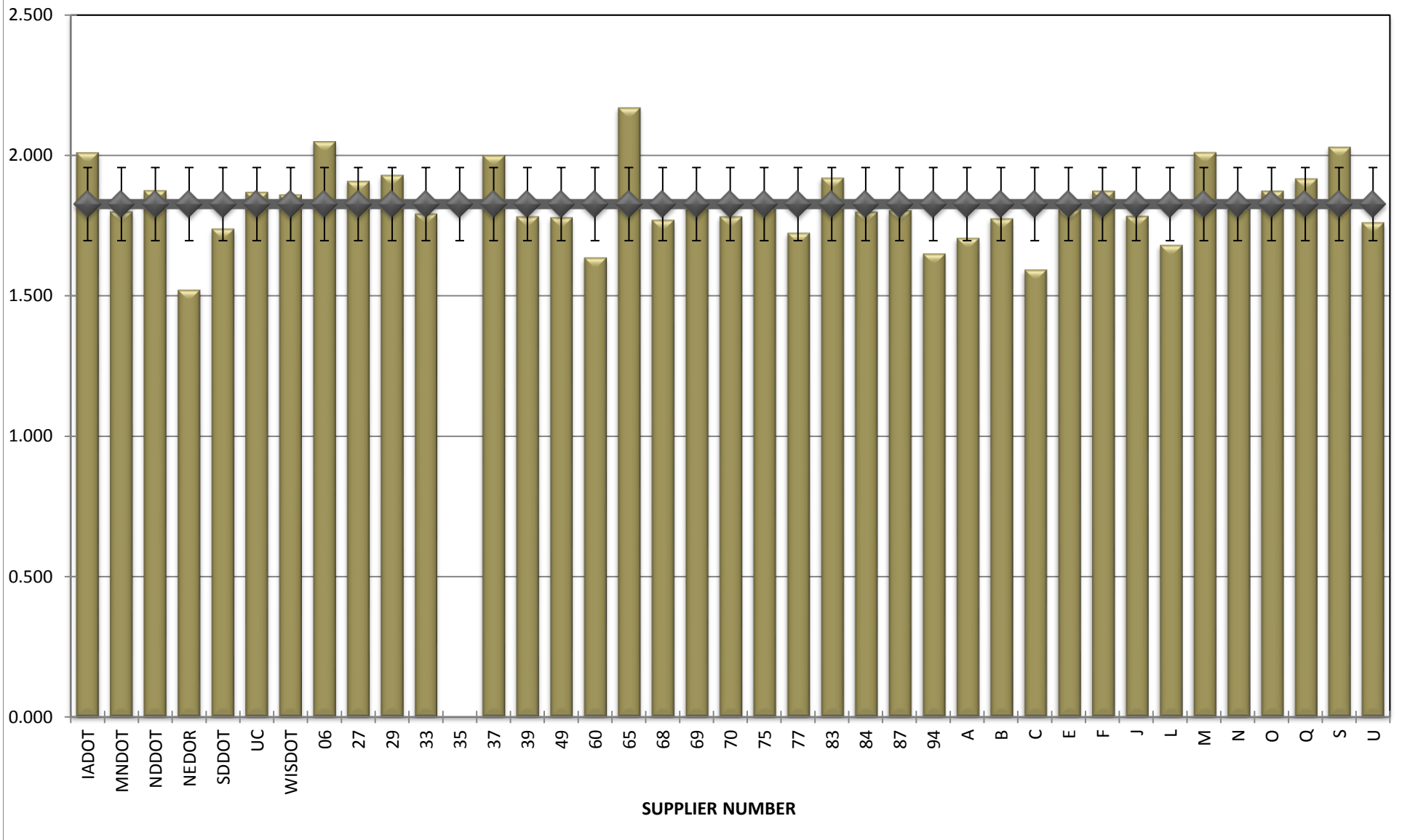
**COMBINED STATE BINDER GROUP ROUND ROBIN  
SUMMARY B 2017-4  
PG 58S-28**

**BBR m-VALUE**



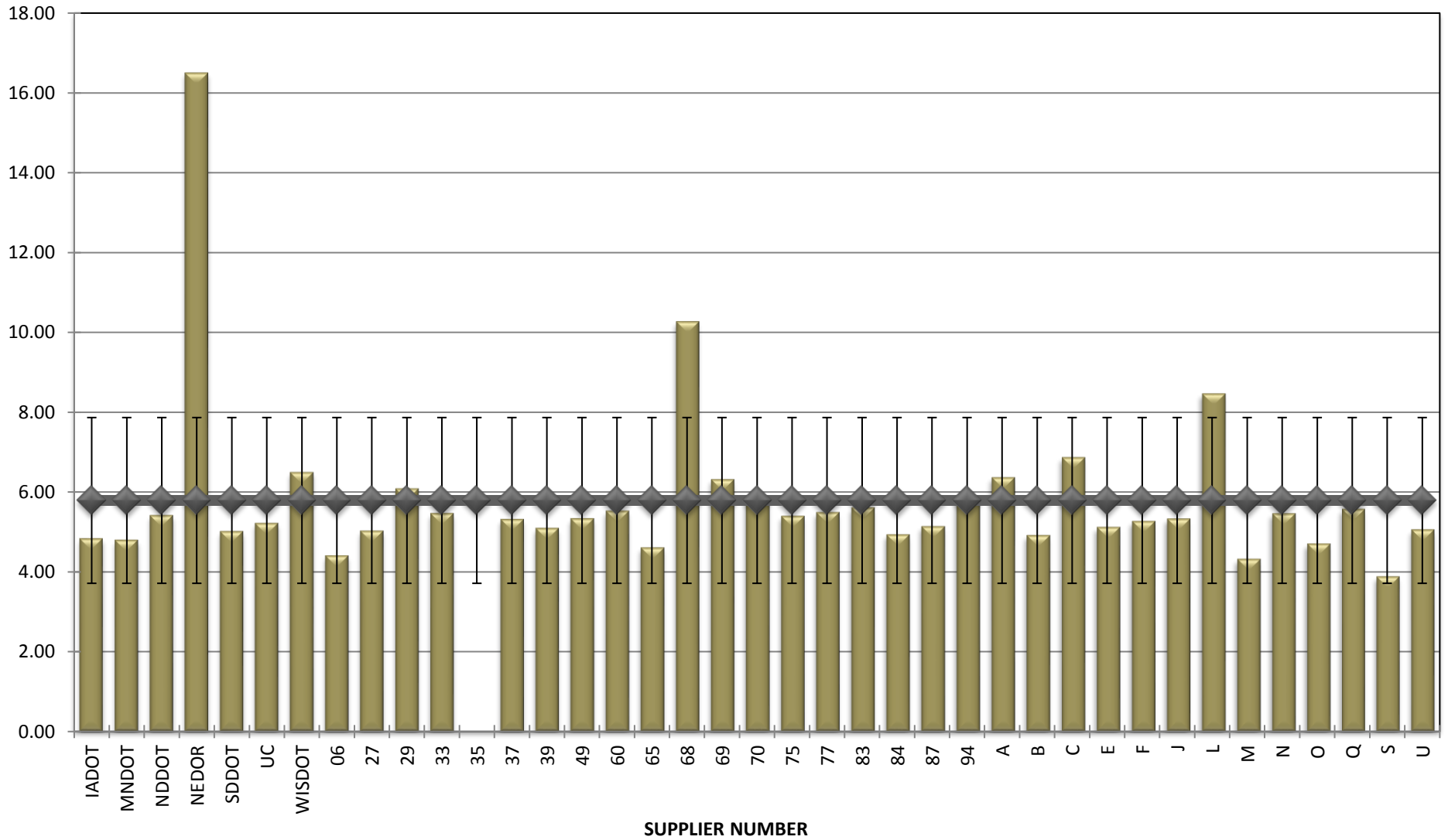
**COMBINED STATE BINDER GROUP ROUND ROBIN  
SUMMARY B 2017-4  
PG 58S-28**

**Jnr @ 100 Pa**



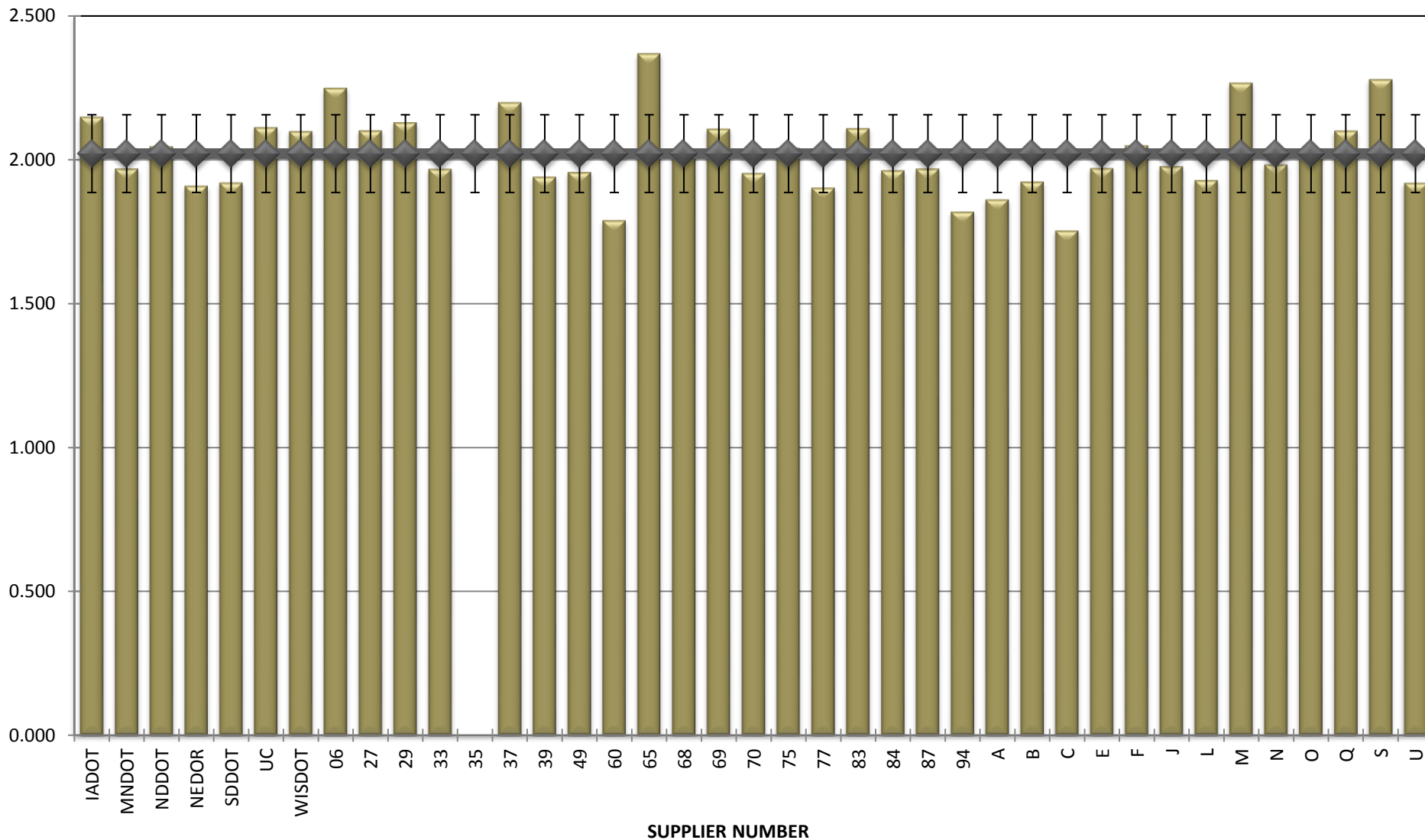
**COMBINED STATE BINDER GROUP ROUND ROBIN  
SUMMARY B 2017-4  
PG 58S-28**

**% Recovery @ 100 Pa**



**COMBINED STATE BINDER GROUP ROUND ROBIN  
SUMMARY B 2017-4  
PG 58S-28**

**Jnr @ 3200 Pa**



**COMBINED STATE BINDER GROUP ROUND ROBIN  
SUMMARY B 2017-4  
PG 58S-28**

**% Recovery @ 3200 Pa**

